

**D**aniels **F**ood **E**quipment

## DVTS 300 and 500 TUMBLER



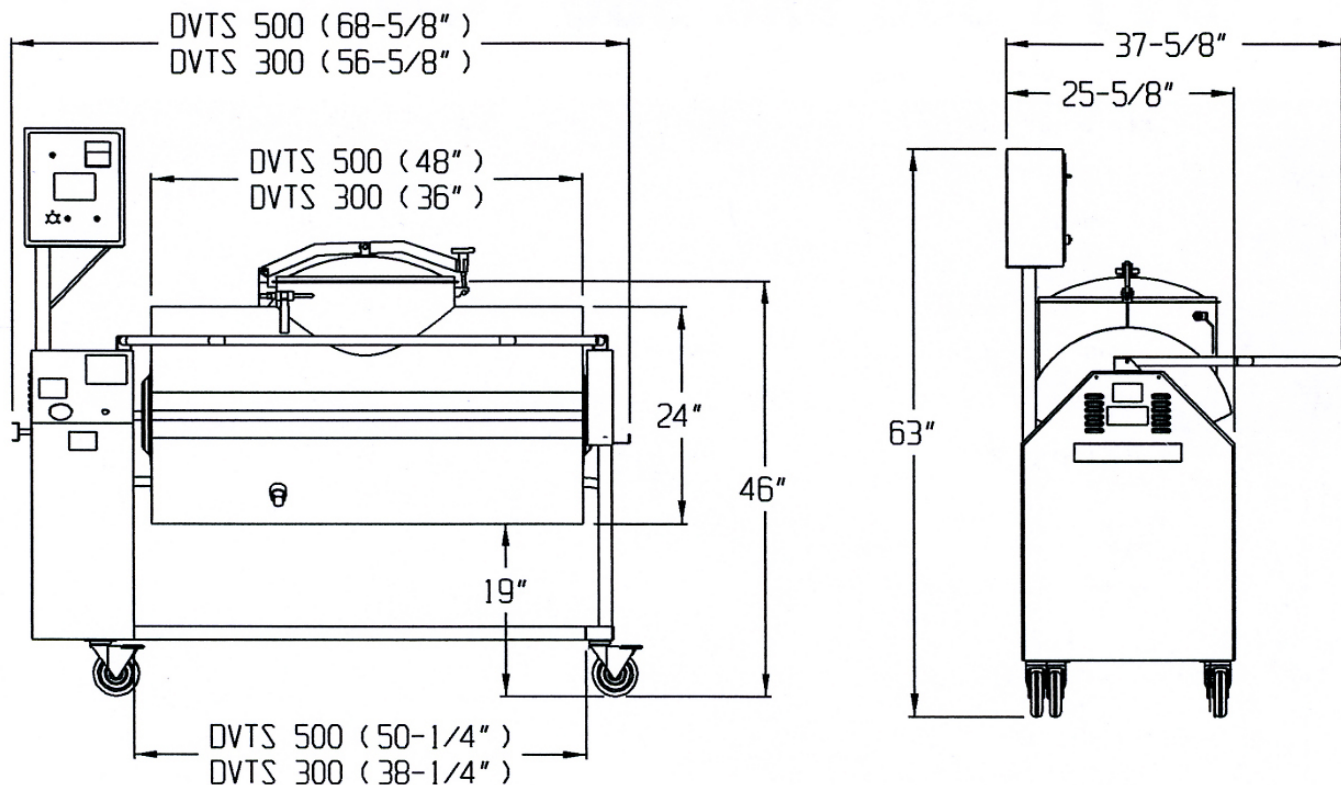
If your looking for a quality tumbler you found it! The DVTS 300 and 500 tumbler Have variable speed control, 0 to 15 rpm. Easy to clean. Safety bar and safety switch. LED timer in hours and minutes, also does batch counting. Nema 4 control panel. Foward and reverse tumbling. Jog switch so you can rotate the tank just where you want it for unloading, loading and cleaning. Two vacuum filters. Liquid filled vacuum guage. Drain plug. 115 volt. Optional paddle for aggressive tumbling. Gain profits by tumbling, weight gain and tenderizing all in minutes.

**D**aniels **F**ood **E**quipment

Distributed By:  
Doug Care Equipment, Inc.  
PO Box 1058  
Springville CA 93265  
888-278-0377 [doug@dougcare.com](mailto:doug@dougcare.com)

# DANIELS FOOD EQUIPMENT

## DVTS 300 AND 500 VACUUM TUMBLER



### SPECIFICATIONS

<b>TOTAL POWER INPUT:</b>	12-1/2 AMP, 115 VOLT, 60 Hz.
<b>TUMBLER DRIVE DC:</b>	VARIABLE SPEED CONTROL, FWD/OFF/REV
<b>DRIVE MOTOR:</b>	1/2 HP, DC.
<b>VACUUM PUMP:</b>	1/4 HP 115 VOLT, 60 Hz
<b>TIMER:</b>	SX 160 DIGITAL TIMER, HOURS, MINUTES
<b>ELECTRONIC CONTROLS:</b>	TUMBLER SPEED-ADJUSTABLE 0-15 RPM "JOG"- "RUN" TOGGLE SWITCH, "FWD"- "REV" TOGGLE SWITCH "START"- "STOP" TOGGLE SWITCH, VACUUM PUMP "START"- "STOP" TOGGLE SWITCH
<b>MAXIMUM CAPACITY:</b>	DVTS 500 (550-LBS.)    DVTS 300 (450-LBS.)
<b>WEIGHT:</b>	DVTS 500, 400-LBS. (NET)    DVTS 300, 365 LBS (NET)

Distributed By:  
Doug Care Equipment, Inc.  
PO Box 1058  
Springville CA 93265  
888-278-0377    doug@dougcare.com